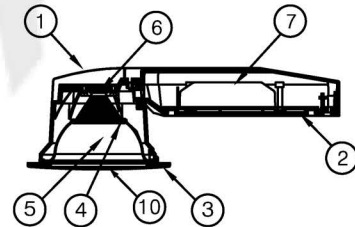
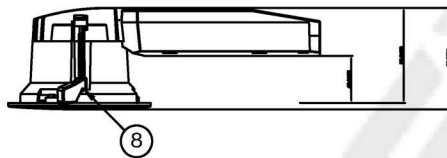
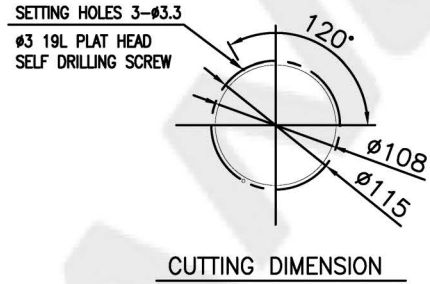
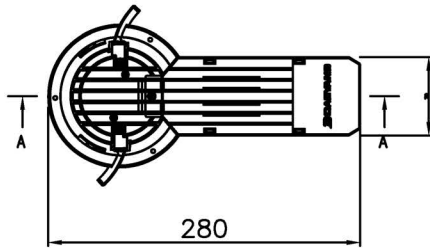
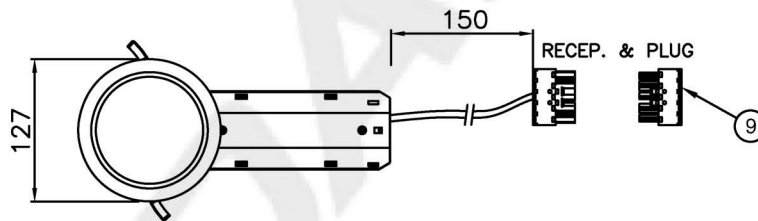


CAPACITY	SYMBOL/ SERIAL NO.	CIRCUIT DIAGRAM
AC220V~240V, 50/60Hz		
9W		



SECTION A-A

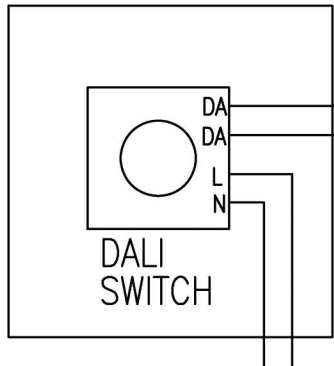
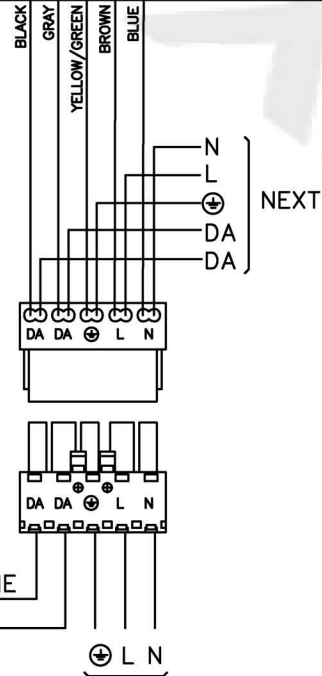
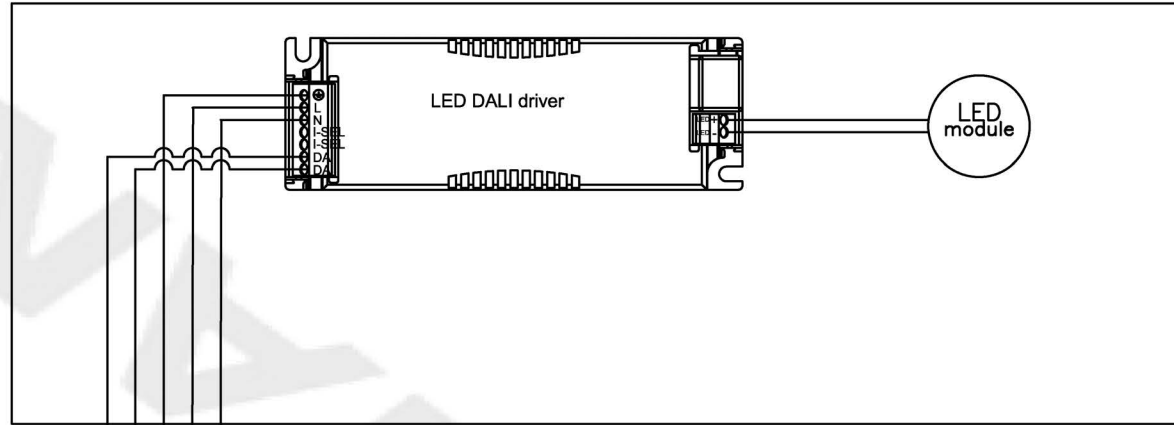


* Front part of the Down light after installation satisfies IP44

10	GLOBE	POLYCARBONATE	1	RED	5	REFLECTOR	POLYCARBONATE	1	
9	5P CONNECTOR	RECEP. & PLUG SET	1		4	DIFFUSER	POLYCARBONATE	1	MILKY
8	FITTING SUPPORT	POLYCARBONATE	2		3	FASCIA	POLYCARBONATE	1	WHITE
7	LED driver	DALI	1		2	BODY	POLYCARBONATE	1	
6	LED module	-	1	3,000±300K	1	FRONT HEAD	ALUMINIUM DIE CASTING	1	

NO.	NAME OF PARTS	MATERIAL	Q'TY	REMARKS	NO.	NAME OF PARTS	MATERIAL	Q'TY	REMARKS
APPROVED	J. W. PARK	UNIT	MM	TITLE LED DOWN LIGHT DIMMING CONTROL TYPE FOR MARINE USE					
CHECKED	S. M. SON	SCALE	N/S						
DRAWING	B. K. HWANG	COLOR	N-9.3						
DATE	2023.07.18	IP	44						
					MODEL NO.	LEC0107WF-P2069WGRPEDtC30-C5PW	WEIGHT	0.7 Kg	
					DWG NO.	LO1720033	SHEET NO.		

NO	CONTENT	DATE	REVISER	APPROVAL
△				
△				
△				



TITLE:	SCALE	N / S	UNIT	MM	NO.	REVISED
DALI DIMMING TYPE CONNECTION DIAGRAM					△	
	PROJECT METHOD	⊕	WEIGHT	KG	△	
DAEYANG	APPROVED	J. W. PARK			MATERIAL	ASS'Y
	CHECKED	S. M. SON			DWG NO.	
	DRAWN	B. K. HWANG			SHEET NO.	
	DATE	2023. 03. 29				3-A